



DOUBLE NORWICH COURT BOB MAJOR

What is in a name ?

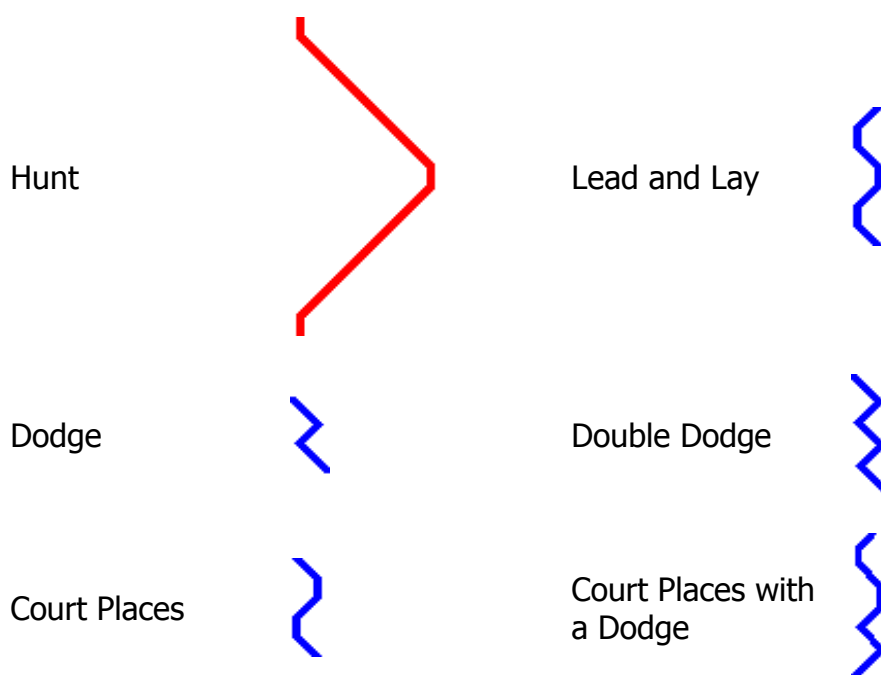
Double Norwich Court Bob Major is often known as "The Queen of the plain major methods". The first peal in the method was 9th March 1741 in Norwich at St. Michael and All Angels Coslany.

MAJOR	It is rung on eight bells
BOB	It includes dodges and the Treble Plain Hunts
COURT	Court Places are made
NORWICH	The base method is Single Norwich
DOUBLE	It is a Double method

Place Notation

Constructing the method:	<u>12345678</u>		
	21436587	x	All pairs cross
	24135678	14	The bells in 14 lie still
	42316587	x	All pairs cross
	24361578	36	The bells in 36 lie still
	42635187	x	All pairs cross
	24365817	58	The bells in 58 lie still
	42638571	x	All pairs cross
	46283751	18	The bells in 18 lie still

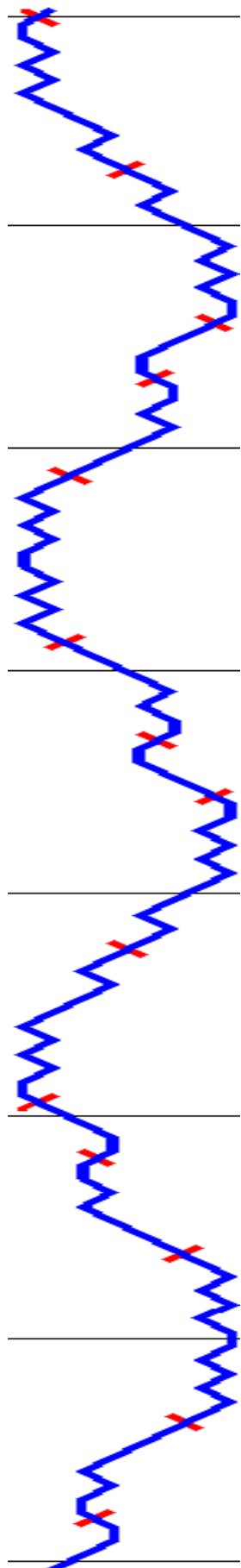
Types of work





David G Salter

The Line



Learning the Line

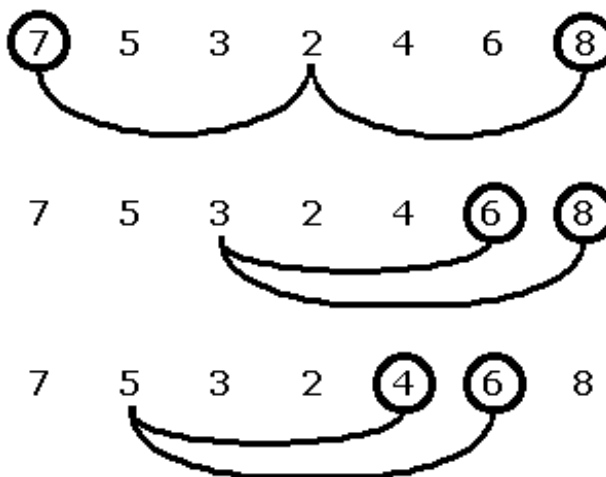
- 2nd Lead, Double Dodge, Treble Bob become 7th place bell
- 7th Double Dodge, Lay, 56 places, dodge become 4th place bell
- 4th Double Dodge 12, lead, Double Dodge 12 become 5th place bell
- 5th Dodge 56 places, Lay, Double Dodge become 6th place bell
- 6th Treble Bob in, Double Dodge, Lead become 3rd place bell
- 3rd 34 Places, Dodge, Double Dodge 78 Lay become 8th place bell
- 8th Double Dodge 78, 34 Dodge, 34 Places become 2nd place bell

Using the Treble

- If the Treble turns you from the front or back make in 56 if the back 34 if the front.
- The Treble always runs through your places.
- Pass the Treble in 3rd going in long front work and pass the Treble in 3rd leaving the front.
- Pass the Treble in 7ths going up, long work at the back and pass the Treble in 7ths to go down.
- Pass the Treble in 5th going out Treble Bob work.
- Pass the Treble in 5th going in Treble Bob work.

General Rules

- Always dodges up on the front with your Course bell and down with your after bell.
- Always dodge up at the back with your course bell and down with your after bell.
- Never dodge in 34 or 56 with your course or after bell
- The bells you dodge with in 34 and 56 are two away from you in the coursing order. ie.



The bell that leaves the dodging first goes the furthest



ELY DIOCESAN ASSOCIATION OF CHURCH BELL RINGERS

Teaching and Learning Aids

David G Salter

Calls

Bobs are usually made in	35124768	Singles are usually made in	35124768
6ths place.	31527486	6ths, 7ths and 8ths places	31527486
	13254768		13254768
	12345786		12345768
	21437568		21437586
	24135786		24135768

If you were 2nds place bell the lead prior to a Bob, you will make the Bob and retrace your steps becoming 3rds place bell at the next lead end. The same is true for a Single.

If you were 5ths place bell the lead prior to a Bob, you will do an extra dodge down and become 8ths place bell, becoming 2nds place bell at the next lead. If a Single is called, you will Double Dodge, make 7ths and become 7ths place bell, becoming 4ths place bell at the next lead end.

If you were 3rds place bell the lead prior to a Bob, you Double Dodge up, do an extra dodge, and become 7ths place bell, becoming 4ths place bell at the next lead. If Single is called, you Double Dodge up make 8ths and uneffected.

Callings

Most compositions are given by the lead order. 1, 2, 3, 4, 5, 6, 7 but could also be In, 5ths, Out, Home. (This usually applies with 4ths place calls).

Transposititons:	Bob at	1	effects	532	becoming	253
	Bob at	2	effects	468	becoming	846
	Bob at	3	effects	753	becoming	375
	Bob at	4	effects	246	becoming	624
	Bob at	5	effects	875	becoming	32465 and shortens the course
	Bob at	6	effects	324	becoming	432
	Bob at	7	effects	687	becoming	768
	Single at	1	effects	532	becoming	235
	Single at	2	effects	468	becoming	864
	Single at	3	effects	753	becoming	357
	Single at	4	effects	246	becoming	642
	Single at	5	effects	875	becoming	587
	Single at	6	effects	324	becoming	423
	Single at	7	effects	687	becoming	786

Double Norwich Court Bob Major



ELY DIOCESAN ASSOCIATION OF CHURCH BELL RINGERS

Teaching and Learning Aids

David G Salter

1 2 3 4 5 6 7 8	1 8 6 7 4 5 2 3	1 3 5 2 7 4 8 6	1 6 4 8 2 7 3 5	1 5 7 3 8 2 6 4	1 4 2 6 3 8 5 7	1 7 8 5 6 3 4 2
2 1 4 3 6 5 8 7	8 1 7 6 5 4 3 2	3 1 7 5 4 7 6 8	6 1 8 4 7 2 5 3	5 1 3 7 2 8 4 6	4 1 6 2 8 3 7 5	7 1 5 8 3 6 2 4
3 4 1 3 5 6 7 8	8 7 1 6 4 5 2 3	3 2 1 5 7 4 8 6	6 8 1 4 2 7 3 5	5 3 1 7 8 2 6 4	4 6 1 2 3 8 5 7	7 5 1 8 6 3 4 2
4 2 3 1 6 5 8 7	7 8 6 1 5 4 3 2	2 3 5 1 4 7 6 8	8 6 4 1 7 2 5 3	3 5 7 1 2 8 4 6	6 4 2 1 8 3 7 5	5 7 8 1 3 6 2 4
5 4 3 6 1 5 7 8	8 7 6 5 1 4 2 3	3 2 5 4 1 7 8 6	6 8 4 7 1 2 3 5	5 3 7 2 1 8 6 4	4 6 1 8 1 3 5 7	7 5 8 3 1 6 4 2
6 4 2 6 3 5 1 8 7	7 8 5 6 4 1 3 2	2 3 4 5 7 1 6 8	8 6 7 4 2 1 5 3	3 5 2 7 8 1 4 6	6 4 8 2 3 1 7 5	5 7 3 8 6 1 2 4
7 4 3 6 5 8 1 7	8 7 6 5 4 3 1 2	3 2 5 4 7 6 1 8	6 8 4 7 2 1 5 3	5 3 7 2 8 4 1 6	4 6 2 8 3 7 1 5	7 5 8 3 6 2 1 4
8 4 6 3 8 5 7 1	7 8 5 6 3 4 2 1	2 3 4 5 6 7 8 1	8 6 7 4 5 2 1 3	3 5 2 7 4 8 6 1	6 4 8 2 7 3 5 1	5 7 3 8 2 6 4 1
4 6 2 8 3 7 5 1	7 5 8 3 6 2 4 1	1 4 3 6 5 8 7 2	8 7 6 5 4 3 2 1	3 2 5 4 7 6 8 1	6 8 4 7 2 5 3 1	5 3 7 2 8 4 6 1
6 4 8 2 7 3 1 5	5 7 3 8 2 6 1 4	4 2 6 3 8 5 1 7	7 8 5 6 3 4 1 2	2 3 4 5 6 7 1 8	8 6 7 4 5 2 1 3	3 5 2 7 4 8 1 6
4 6 2 8 7 1 3 5	7 5 8 3 2 1 6 4	2 4 3 6 8 1 5 7	8 7 6 5 3 1 4 2	3 2 5 4 6 1 7 8	6 8 4 7 5 1 2 3	5 3 7 2 4 1 8 6
6 4 8 2 1 7 5 3	5 7 3 8 1 2 4 6	4 2 6 3 1 8 7 5	7 8 5 6 1 3 2 4	2 3 4 5 1 6 8 7	8 6 7 4 1 5 3 2	3 5 2 7 1 4 6 8
4 6 8 1 2 7 3 5	7 5 3 1 8 2 6 4	2 4 6 3 3 8 5 7	8 7 5 1 6 3 4 2	3 2 4 1 5 6 7 8	6 8 7 1 4 5 2 3	5 3 1 2 7 4 8 6
6 4 1 8 7 2 5 3	5 7 1 3 2 8 4 6	4 2 1 6 8 3 7 5	7 8 1 5 3 6 2 4	2 3 1 4 6 5 8 7	8 6 1 7 5 4 3 2	3 5 1 2 4 7 6 8
6 1 4 8 2 7 3 5	5 1 7 3 8 2 6 4	4 1 2 6 3 8 5 7	7 1 8 5 6 3 4 2	1 1 3 4 5 6 7 8	8 1 6 7 4 5 2 3	3 1 5 2 7 4 8 6
1 6 8 4 7 2 5 3	1 5 3 7 2 8 4 6	1 4 6 2 8 3 7 5	1 7 5 8 3 6 2 4	1 2 4 3 6 5 8 7	1 8 7 6 5 4 3 2	1 3 2 5 4 7 6 8
1 8 6 7 4 5 2 3	1 3 5 2 7 4 8 6	1 6 4 8 2 7 3 5	1 5 7 3 8 2 6 4	1 4 2 6 3 8 5 7	1 7 8 5 6 3 4 1	1 2 3 4 5 6 7 8