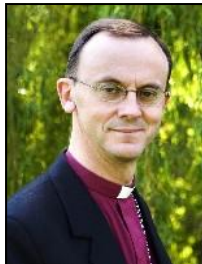


## A final message from Bishop John



The Rt. Revd. Dr John Inge

**This message brings with it my warmest good wishes for a happy, holy and blessed Christmas to all associated with the Church Schools of the Diocese.**

As I write it, my family and I are preparing to move to Worcester. We shall leave with very mixed feelings: excited by the prospect of serving God in a delightful and fascinating part of the world, sad at leaving a place where we have been very happy for nearly twelve years.

During that time I have greatly appreciated my association with Church Schools: I have been fortunate to be able to visit a large number of schools and also to welcome thousands of children to the Cathedral for Schools Days every year and I shall take with me some very happy memories.

Church schools are a very crucial part of the church's ministry and it has been very

encouraging to experience the vibrancy of the life of the schools of this Diocese during my time here.

I give thanks for the quality of education which so many young people are receiving at them thanks to the skill and dedication of those who work in them .

The future is an unknown country for all of us but I leave encouraged not only by many happy memories and the vibrant life of Church Schools but also, and much more importantly, confident that Jesus Christ, whose birth we prepare to celebrate at this time and whose coming again in glory we await, is Lord and King of all and that his purposes for us all are good.

I pray that this same Jesus may keep you and all associated with the Church Schools of this Diocese close to himself and may bless you all richly in your continuing Christian work and witness.

<b>Inside this issue:</b>	
<b>Bishop John's Farewell</b>	1
<b>From the Schools Team</b>	2
<ul style="list-style-type: none"> <li>• 11 Million Takeover Day</li> <li>• Engaging in the iPod Generation</li> <li>• Faraday Institute</li> </ul>	
<b>From our Schools</b>	
<ul style="list-style-type: none"> <li>• Pupils Tackle Council Issues</li> <li>• Creature Comforts</li> </ul>	
	3
<ul style="list-style-type: none"> <li>• St Martin's at Shouldham</li> <li>• Worldly Approach of City School</li> </ul>	
<b>From The National Society</b>	
<ul style="list-style-type: none"> <li>• Opinion Poll backs Church Schools</li> </ul>	
	4
<b>For Governors</b>	
<ul style="list-style-type: none"> <li>• Recruiting Headteachers Conference</li> <li>• Setting up a Parent Council</li> </ul>	
<b>The Back Page</b>	5
<ul style="list-style-type: none"> <li>• Hellos and Goodbyes</li> <li>• In our Prayers this Month</li> <li>• Vacancies</li> <li>• Welcome to New Governors</li> <li>• Dates for the Diary</li> <li>• Inspections</li> </ul>	

The Schools Bulletin is published fortnightly in term. We are pleased to publish news and notices. Please send details and pictures (.jpeg) and we will try to include them. Send to: [debbie.jordan@ely.anglican.org](mailto:debbie.jordan@ely.anglican.org)

### Canon Tim Elbourne writes

**Children and Young people in our schools and parishes owe a special debt to Bishop John, whose ministry in this diocese will be long remembered with affection and gratitude.**

Canon John (as he then was) came to Ely in 1996 to lead the Education work of the Cathedral. In his time, the Cathedral Centre was created through the conversion of the former public library and a thriving ministry to children and schools has since developed. He has been a member of the Diocesan Board of Education and Training for many years, both as the Chair of the Youth Council and latterly as its overall Chair.

However, it is for his personal ministry with and among young people that we will remember him most fondly. Thousands of children have been to Cathedral School days at which he has led or spoken at the final worship. His tireless visiting of schools and parishes and encouragement to those who work there has been hugely appreciated. His leading of collective worship, class discussions and encounters

with young people in secondary schools has commended our faith in accessible and welcoming ways. And no-one will forget his annual jousting with our youth officer, David Waters, at *Rave in the Nave!* On a personal note, my colleagues and I will greatly miss his friendship, wisdom, and humour.

Our loss is Worcester's gain and we offer John, Denise, Eleanor and Olivia our warmest wishes and prayers for their move and to John in his future ministry.



### Farewell to Bishop John

**The Diocese will formally bid farewell to Bishop John, Denise, Eleanor and Olivia next Saturday, December 1, at 2.00 pm when he will preside at a special All-Age Eucharist in the Cathedral.**



## From the Schools Team

### 11 Million Takeover Day—Diocese of Ely

On Friday 23<sup>rd</sup> November “11 Million Takeover Day” three small groups from Swaffham Bulbeck, Swaffham Prior and Gt. Wilbraham (our top Eco Schools) arrived in Ely to lead audits of the Diocesan Office, the Diocesan Retreat House and the Cathedral.

All the pupils came well primed with specific questions they had prepared in advance.

Each group had to opportunity to interview various members of staff in the different locations to find out just what eco-friendly initiatives were taking place as well taking part in a guided tour. After lunch the three groups presented their findings and recommendations to a panel chaired by Tim Elbourne.

The feedback received from the children was both informative and thought provoking and highlighted a number of areas in all of the respective locations where improvements could be made ie. more use of low energy lights bulbs, reflective panels behind radiators, keeping doors and windows shut to conserve heat.

We very much enjoyed having our young visitors and we hope they too found their visit a pleasurable experience and that it gave them a small taste of the day to day routine at the various establishments.



### Engaging in the iPod Generation

**National Conference  
for Christians  
in School Leadership  
7th—9th February  
2008**

**Every Child Matters in the extended schools of the 21st century. How can Christians in school leadership create a learning environment where all young people can flourish?**

Understanding pressures on your people, building relationships, encouraging strong families and social cohesion, releasing potential, managing behaviour, creating opportunities for spiritual development are all responsibilities of school leaders. This conference will explore some of these issues in the context of both primary and secondary schools.

A conference for all in school leadership. Organised by an independent group of Christian Head Teachers and supported by ACT (Association of Christian Teachers), The Stapleford Centre and TISCA (The Independent Schools Christian Alliance). For more information and a booking form visit:



[www.stapleford-centre.org](http://www.stapleford-centre.org)

### Faraday Institute



The Faraday Institute  
St Edmund's College  
Cambridge CB3 0BN

We are delighted to announce that the Hockerill Educational Foundation has awarded a grant to the Faraday Institute to fund bursaries for school-teachers from the UK or overseas to attend Faraday courses.

The grant will be used especially to fund teachers and trainee teachers who would otherwise be unable to afford the fees.

The first bursaries, to include travel costs, course fees and a book grant, will be awarded for the course 'Introduction to Science and Religion' which takes place 4-6 January 2008. I

If you wish to apply for a Hockerill bursary, please go to the bursary application form for the course which interests you.

Closing date for Hockerill bursaries for the January 2008 course has been extended to 7 December 2007. For more information contact

[Faraday.Administrator@st-edmunds.cam.ac.uk](mailto:Faraday.Administrator@st-edmunds.cam.ac.uk)

## From our Schools

### Pupils tackle Council issues



Youngsters had the chance to see the wheels of democracy turning.

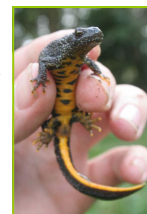
Pupils from **Ely St Mary's Junior School** visited East Cambridgeshire District Council.

The 21 children, all previous or current members of their school council, had a question and answer session with Councillor Mike Rouse and Councillor Ron Bradney before a mock committee meeting where they voted on a new play park in Ely.

Councillor Rouse said “They were a great credit to themselves, their parents, their school and their teachers”.

### Creature Comforts

Great crested newts will get a helping hand from youngsters at **Great and Little Shelford Primary School** after they were awarded a cash for wildlife projects.



South Cambridgeshire District Council has give pupils £820 towards work to re-line the pond, create a safe dipping area and manage overhanging trees.

The grant covers 50% of the project costs

## St Martin at Shouldham Church of England Primary School

**We recently asked schools to tell us about their school name and if it bared the name of a saint or a benefactor.**

Four pupils St Martin at Shouldham very kindly sent in their contribution, here is one of them by Callum Rowland.

*St Martin was a very nice man because one day when he was out riding he met a naked beggar so he got off his horse and cut his beautiful cloak in half for the poor man to share.*

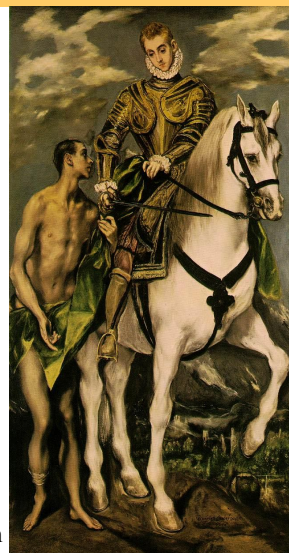
*That night in a dream he was called by his name and Jesus was wearing the naked man's cloak and he said to Jesus in his dream, I am a soldier of Christ and can no longer fight, so he left the army.*

*After that he became a monk and followed Christ. He got Bishop of Tours. The feasts are currently July 4th and November 11th.*

*The churches were named after him; there were 173 by 1800*

You may also be interested to hear that St Martin at Shouldham's distinctive name comes from the dedication of the church in Fincham. Fincham and Shouldham were combined to become St Martin at Shouldham VA Church of England School.

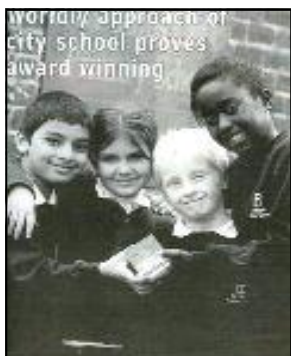
If your school previously carries a particular Saint, or founder, then please send Debbie Jordan your story so we can publish it.



Saint Martin

## Worldly approach of city school proves award winning

**A Cambridge church school's cosmopolitan approach has won it a British Council award.**



Pupils and staff at St Phillip's School won International Schools status following a year of activities, which included producing a book of recipes from around the world and a cultural evening attended by 200 members of the community.

The School also built on links

with a school in northern Ghana, compiling a book of tales from each culture.

The award was presented by news anchor George Alagiah in London's Barbican Centre.

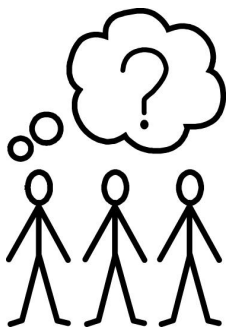
International co-ordinator Trudi Binns said "We want to bring the world into the school for children—we have a very diverse community.

All of the children contributed to the award in some way, and they all enjoyed it very much".

## From the National Society

### Opinion Poll backs Church Schools

**The majority of those who do not see themselves as Christians reject the idea that church schools create divisions between different sections of society, a major survey released last week has found.**



Six out of ten non-Christians who feel that church schools are different from other state schools also believe that church schools give places to children of all backgrounds, and two-thirds of the same group agree that Church of England schools provide a broad and balanced education, the findings show.

The survey of more than 1,000 adults across the UK shows church schools to be positively regarded by people of all faiths and none for the ethos they promote within the learning environment. Of those who agree that church schools are different to other state schools:

- Eight in ten (80 per cent) agree that church schools help young people develop a sense of right and wrong

- 76 per cent think that church schools help young people grow into responsible members of society
- 76 per cent agree that they promote good behaviour and positive attitudes
- 78 per cent agree they have a caring approach to students.

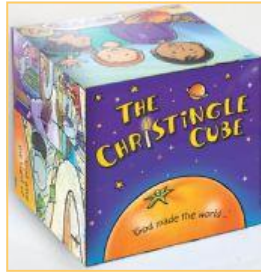
The findings demonstrate that church schools are understood to be distinctive: 45 per cent of those surveyed agree that Church of England schools have clear differences from other state schools. As a key part of this distinctive nature, 78 per cent of these respondents see church schools as having a close relationship with their local church.

In a significant development for those who question the role of collective worship in schools, almost two-thirds (64 per cent) of those who agree that church schools are different said they think that students benefit from attending Christian worship in church schools – and four in ten (40 per cent) non-Christians agree.

You can see the whole Press Release, which includes also comments about RE and Admissions from the link in the Schools Bulletins section of our website.

### The Christingle Cube

**Church House Publishing and The Children's Society have turned oranges into cubes to help children engage with the Christian message of Christingle in a fun and creative way. More than 600,000 children attended a Christingle service last year.**



Christingles are central to the special candlelit carol services held between Advent and Epiphany, where the congregation carry candles mounted on oranges to represent Christ as the light of the world, among other symbols. The service was established by the Moravian Church in 1747, and introduced to England since 1986 to raise money and awareness for the work of The Children's Society.

The cube tells the story of the symbolism of each part of the Christingle orange within the context of God's creation. The format of the new cube follows in the successful footsteps of The Lords' Prayer Cube and The Communion Cube, which all feature simple text and full-colour illustrations aimed at children aged three years and up.

"Held between Advent and Epiphany, a Christingle celebration places children at its heart and is an ideal opportunity to welcome the wider community into church, forge stronger links with local schools and youth groups and together explore the cornerstone messages of the Christian faith," comments the Revd Nigel Asbridge, Chaplain Missioner for The Children's Society.

"Using the familiar symbols of the Christingle, the cube is a useful tool for exploring the foundations of this faith with children: from the Creation and our stewardship and responsibility for it, to the Incarnation and Redemption and the vocation of all Christians to be witnesses to what God has done."

The Revd Mary Hawes, National Children's Adviser for the Archbishops' Council, adds: "This cube provides an opportunity for children to continue exploring the compelling story of the Christingle right through the year. The rich symbolism of Christingle is an ideal way to explain the Christian message to young minds - now the Christingle Cube makes this even easier."

To find out more about the work of the Church of England Children's Society and how they can support local Christingle services, visit [www.christingle.org](http://www.christingle.org)

## For Governors

### One day conference for school governors on Recruiting Headteachers

On 26<sup>th</sup> January 2008 in at the Thistle Hotel, Marble Arch, London, the National Governors Association and National College for Schools Leadership will be holding a FREE one-day conference for governors on recruiting headteachers.

NCSL would be delighted if any governors were interested in attending. The conference is timed to support governors as they

start the key recruitment period for headteachers.

Full information and a Booking form can be found at: <http://www.ncsl.org.uk/tomorrowsleaderstoday/news/news-januaryconference.cfm> or via the School Bulletins section of our own website.

### Setting up a Parent Council



In its White Paper, *Higher Standards, Better Schools for All* the Government made a commitment to increase parental involvement in schools: not only involvement in their child's learning but also influencing decisions about the pattern of service provision and decisions about the running of their child's school.

Part of this strategy is to encourage all schools to review the effectiveness of their current arrangements and consider setting up a Parent Council that will provide a forum for parents to express their views and influence the running of their child's school.

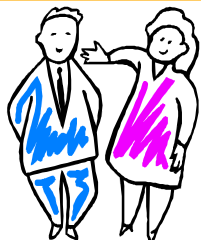
Only certain foundation or foundation special schools with a Trust that appoints the majority of the governing body members (these are referred to as "majority governance Trust Schools") *must* establish a Parent Council. Other maintained schools are free to decide whether or not to set one up.

Parents are already heavily involved in schools governance and, of course, have a vital role to play, not only in their own child's achievements, but also in the life of the school and the wellbeing of its pupils. Many parents are involved too is a variety of community and 'friends of the school' groups which provide vital funds as well as a social opportunity for the whole school community.

Some people retain vivid memories of sparsely attended Annual Parents' Meetings and other 'one off' meetings in school. However, Government hopes that a Parents Council might be a way in which to break down barriers, perceived or actual, between the school and parents who are less involved in the school. The hope is that a Parent Council might provide schools with support in many areas, from developing their strategies for engaging hard-to-reach audiences, to developing community cohesion, to supporting the wellbeing of the school and its pupils.

We should be interested to hear of any of our schools that are planning to set up a Parents' Council.

## Hellos and Goodbyes



The Bishop has appointed the **Revd. Nigel Cooper** as **Bishop's Adviser for Further Education**. The appointment comes at the time a major report on Chaplaincy to the FE colleges of the diocese is published.

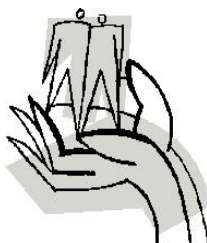
Nigel continues as Chaplain at the Anglia Ruskin University, Cambridge.



## Dates for the Diary

Bishop John's Leaving Service	1st Dec 2pm	Ely Cathedral
National Conference for Christians in School Leadership— 'Engaging in the iPod Generation'	7th-9th Feb. 2008	Coton House, Rugby, Warwickshire

## In our Prayers over the next month



Day	School
27th November	March All Saints Inter Church Aided Primary
1st December	William Marshall CE Primary
5th December	Bury CE Primary
10th December	Ely St Mary's CE Junior
12th December	Little Thetford CE Primary

## Welcome to newly appointed Foundation Governors

### New (or re-appointed) Foundation Governors:-

- ◆ Dr Philip Rayner—Abbots Ripton CE Primary School
- ◆ Dr Iain Mason—The Orchards CE Primary School
- ◆ Catherine Mason—The Orchards CE Primary School
- ◆ Diana Ogunlana—St Philip's CE Primary School
- ◆ Martin Lomas—Holme CE Primary School
- ◆ Revd Anne Rigelsford—St Luke's CE Primary School

May I ask all Clerks to keep a check on the terms of office of all Foundation Governors and advise Debbie Jordan of any re-appointments.

Thank you,

*Debbie*



## Inspections

Inspection Reports (Ofsted and Statutory Church School Inspection) were published recently for the following schools:

**No new reports received at this time.**

All Inspection Reports can be read directly via the link on our website. Click on:

**"Information about Individual Schools" on the Education or Schools homepages**

## Vacancies

SCHOOL	VACANCY	CLOSING DATE
Holywell CE Primary	Foundation Stage Teacher (Temp)	7.12.07

Contact details for all schools can be found on our website [www.ely.anglican.org/education/schools/Info/Sch](http://www.ely.anglican.org/education/schools/Info/Sch)

**We're on the web!**  
[www.ely.anglican.org](http://www.ely.anglican.org)